

LEGEND

GENERAL ARRANGEMENT PLANS LEGEND

NOTE: WHERE NOMINATED ON DRAWINGS OR SCHEDULES A NUMERICAL SUFFIX INDICATES MULTIPLE TYPES I.E. BAL1=BALUSTRADE TYPE 1, ETC. REFER TO ARCHITECTURAL SCHEDULES FOR FURTHER INFORMATION

Rev.	Date	Approved by	Revision Notes
A-S4.55	09.08.19	JM	S4.55 Application

 <p>Average star rating</p> <p>NATIONWIDE HOUSE ENERGY RATING SCHEME</p> <p>www.nathers.gov.au</p>	Certificate no.:	0004150710	
	Assessor Name:	Trong Thien Huynh	
	Accreditation no.:	20887	
	Certificate date:	23 August 2019	
	Dwelling Address:		
Darcy Road, Hawkesbury Road			
WESTMEAD, NSW			
2145			
www.nathers.gov.au			

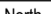
Deicorp
Level 3, 161 Redfern Street, Redfern
NSW 2016, Australia

Project Title
WSU - Lot 5
158-164 Hawkesbury Road, 2a Darcy Road Westmead NSW 2145 Australia

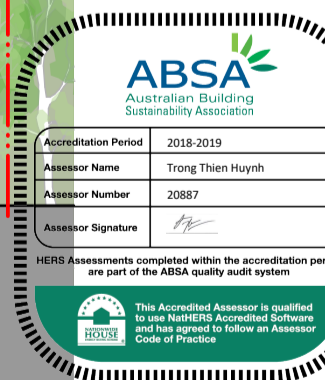
Drawing Title

GA Plans

Overall Roof Plan

Scale	Project No.	Drawn by	North
1:200, 1:150, 1:1 @A1, 50% @A3	16001	turner	
Status	Dwg No.	Rev	
For Information	DA-110-250	A-S4.55	

TURNER L 7, ONE Oxford Street Darlinghurst NSW 2010 Australia T +61 2 8968 0000 F +61 2 8968 0068 turnersaudio.com.au



 <p>4.8</p> <p>Average star rating</p> <p>NATIONWIDE HOUSE</p> <p>ENERGY RATING SCHEME</p> <p>www.nathers.gov.au</p>	<p>Certificate no.: 0004150710</p> <p>Assessor Name: Trong Thien Huynh</p> <p>Accreditation no.: 20887</p> <p>Certificate date: 23 August 2019</p> <p>Dwelling Address:</p>	
	<p>Darcy Road, Hawkesbury Road</p> <p>WESTMEAD, NSW</p> <p>2145</p>	
	<p>www.nathers.gov.au</p>	
	<p>www.nathers.gov.au</p>	
	<p>www.nathers.gov.au</p>	

Project Title			
WSU - Lot 5			
158-164 Hawkesbury Road, 2a Darcy Road Westmead NSW 2145 Australia			
Drawing Title			
GA Elevation			
North Elevation			
Scale	Project No.	Drawn by	North
1:200, 1:100 @A1, 50% @A3	16001	turner	
Status	Design No.	Rev	
For Information	DA-210-001	A-4.55	



Project Title			
WSU - Lot 5			
158-164 Hawkesbury Road, 2a Darcy Road Westmead NSW 2145 Australia			
Drawing Title			
GA Elevation			
East Elevation			
Scale	Project No.	Drawn by	North
1:200, 1:100 @A1, 50% @A3	16001	turner	
Status	Dwg. No.	Rev	
For Information	DA-210-002	A-54.55	

7, ONE Oxford Street
Perth NSW 2010
Australia
T +61 2 8668 0000
F +61 2 8668 0068
tumersstudio.com.au

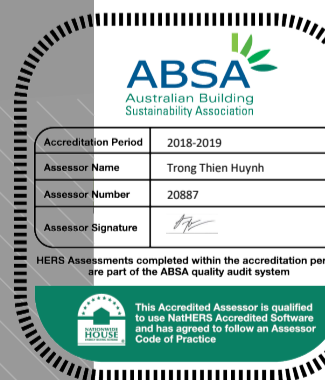
NOTES
THIS DRAWING IS THE COPYRIGHT © OF TURNER. NO REPRODUCTION WITHOUT PERMISSION. UNLESS NOTED OTHERWISE THIS DRAWING IS NOT FOR CONSTRUCTION. ALL DIMENSIONS AND LEVELS ARE TO BE CHECKED ON SITE PRIOR TO THE COMMENCEMENT OF WORK. IN THE EVENT OF ANY DISCREPANCIES FOR CLARIFICATION BEFORE PROCEEDING WITH WORK. DRAWINGS ARE NOT TO BE SCALED. USE ONLY DIMENSIONS PROVIDED. REFER TO CONSULTANT DOCUMENTATION FOR FURTHER INFORMATION.

DLG2 Quality Endorsed Company ISO 9001:2008, Registration Number 28475
Notified Architect: Nicholas Turner, 8895, ABA 88 064 084 911

BASIX

LEGEND





 <p>4.8</p> <p>Average star rating</p> <p>NATIONWIDE HOUSE ENERGY RATING SCHEME</p> <p>www.nathers.gov.au</p>	<p>Certificate no.: 0004150710</p> <p>Assessor Name: Trong Thien Huynh</p> <p>Accreditation no.: 20887</p> <p>Certificate date: 23 August 2019</p> <p>Dwelling Address: Darcy Road, Hawkesbury Road WESTMEAD, NSW 2145</p> <p>www.nathers.gov.au</p>	
--	--	---

Project Title			
WSU - Lot 5			
158-164 Hawkesbury Road, 2a Darcy Road Westmead NSW 2145 Australia			
Drawing Title			
GA Elevation			
West Elevation			
Scale	Project No.	Drawn by	North
1:200, 1:100 @A1, 50% @A3	16001	turner	
Status	Design No.	Rev	
For Information	DA-210-004	A-54.55	

TURNER L 7, ONE Oxford Street
Dorlinghurst NSW 2010
Australia T +61 2 8968 0000
F +61 2 8968 0068
turners@sia.com.au

BAL1	Balustrade Type 1: Semi-Framless clear glass balustrade. Framing system, finish to match PF3	CL3	Cladding Type 3: Profiled metal cladding, color/ton 'sunrise' finish
	Balustrade Type 2: Semi-Framless clear glass balustrade fixed to solid spigots (parapet/wall type). Framing system, finish to match PF3	CL4	Cladding Type 4: FO cladding, colour to match PF3
BAL3	Balustrade Type 3: Vertical metal balustrade, powder coat finish to match PF3	CL5	Cladding Type 5: Metal cladding, colour to match PF1
CL1	Cladding Type 1: Metal cladding, colour to match PF4	CL6	Cladding Type 6: Timber plastic composite cladding, acoustic lining to balcony sides and soffits, 'spotted' green finish
CL2	Cladding Type 2: Metal cladding, colour to match PF8	CL7	Cladding Type 7: Polished stainless steel cladding

- COF1 Concrete, off form
Clear finish or to landscape architect specification
- COF2 Concrete, off form
Paint finish, colour to match PF1
- GC1 Glass, Clear, Type 1:
Glass, clear, to Basix and Acoustic report requirements.
Aluminium framing system, finish to match PF8
- GC2 Glass, Clear, Type 2:
Glass, light bronze tinted, to Basix and Acoustic report requirements.
Aluminium framing system, finish to match PF4
- GSB1 Glass, Colourback, Type 1:
Glass, Light Bronze, to Basix and Acoustic report requirements.
Aluminium framing system, finish to match PF4

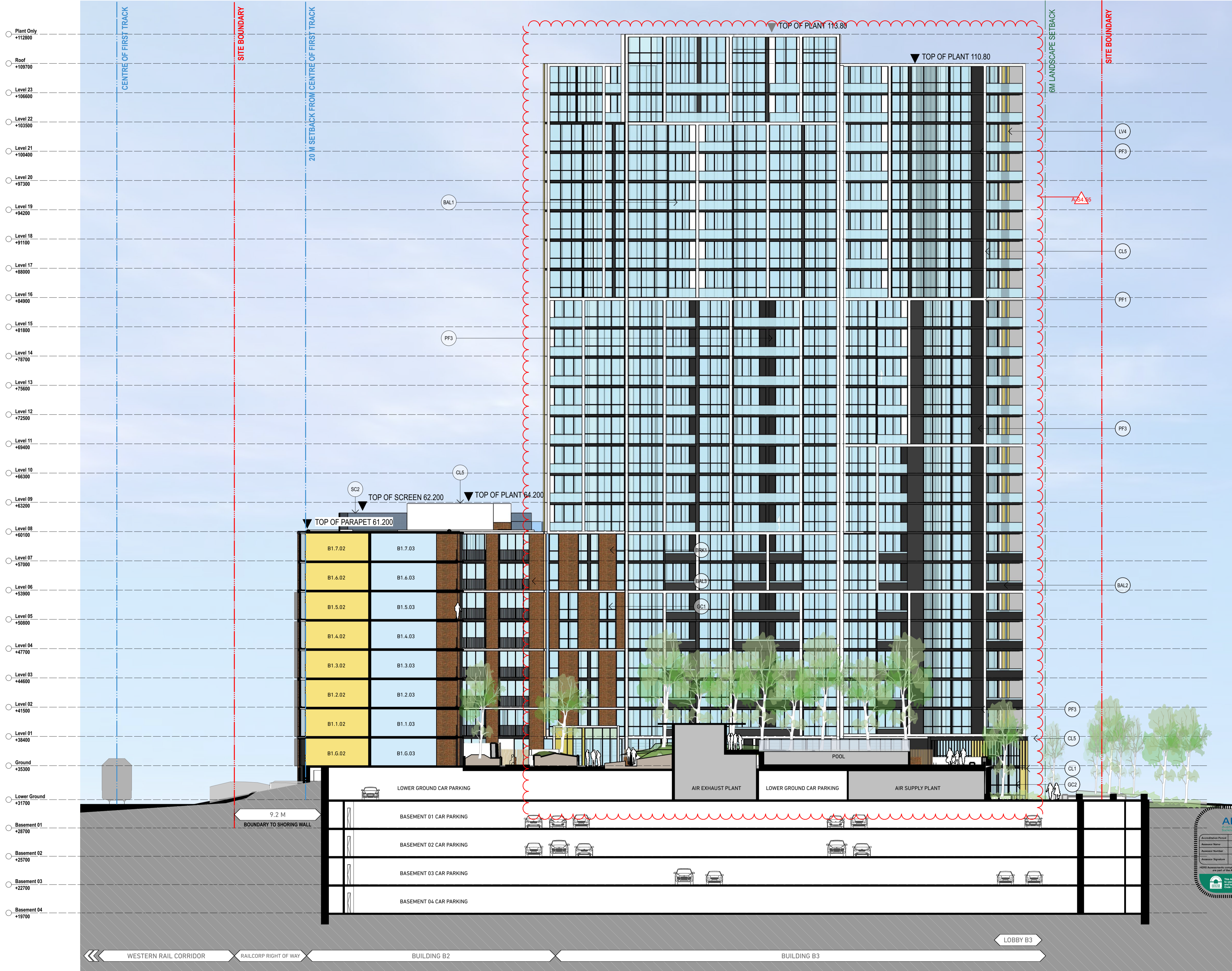
GCB2	Glass, Colourback, Type 2: Glass, Dark Grey, to Besix and Acoustic report requirements. Aluminium framing system, finish to match PF6
LV1	Louvre Type 1: Clear fixed open glass louvre system similar to Breezeway
LV2	Louvre Type 2: Acoustic horizontal louvre system. Metal, timber effect finish
LV3	Louvre Type 3: Acoustic horizontal louvre system. Metal powder coated finish to match PF5
LV4	Louvre Type 4: Fixed louvre louvre system. Aluminium, finish to match PF4

- LVS** Louvre Type 5:
Fixed vertical louver system. Aluminium, finish to match PF5
- LVB** Louvre Type 6:
Fixed vertical louver system. Aluminium, finish to match PF8
- LV7** Louvre Type 7:
Fixed horizontal louver system. Aluminium, finish to match PF8
- LVB** Louvre Type 8:
Fixed vertical louver system. Timber finish to match CL6
- LVS** Louvre Type 9:
Clear operable glass louver system similar to Breezeway

PC1	Precast Concrete Type 1: Precast Concrete Finish: penetrating low maintenance stain finish equal to Keim concrete Lasur system, to match PF1
PF1	Paint Finish Type 1: Vivid White Finish to match Dulux 'Vivid White'
PF2	Paint Finish Type 2: Medium Beige Finish to match Dulux 'Harold'
PF3	Paint Finish Type 3: Dark Grey Finish to match Dulux 'Domino'
PF4	Paint Finish Type 4: Finish to match Dulux Electro 'Shimmering Champagne' powder coat

- PF5 Paint Finish Type 5:
Finish to match Dulux 'Flat White' powder coat
- PF6 Paint Finish Type 6:
Finish to match Dulux 'Flooded Gum'
- PF7 Paint Finish Type 7:
Finish to match PF8
- PF8 Paint Finish Type 8:
Finish to match Dulux powder coat 'Black Ace'
- SC1 Screen Type 1:
Timber batten finish, finish similar to Cedar

- SC2 Screen Type 2:
Architectural metal mesh screen to comply with Railcorp requirements
- SC3 Screen Type 3:
Metal louvered screen with integrated planting at mechanical air intake. Colour to match PF4
- SC4 Screen Type 4:
Metal framed shedding structure with timber battens
- BRK1 Brick Type 1:
Face brick similar in colour to Boral's 'Shorstone Mix'
- BRK2 Brick Type 2:
Glazed face brick to address landscaped areas, to future selection



Elevation/ Section Legend

- | | | | | | | | |
|--|--|--|---|---|---|---|---|
| (BAL1) Balustrade Type 1: Semi-Framless clear glass balustrade. Framing system, finish to match PFS | (CL3) Cladding Type 3: Prefinished metal cladding, 'surtinist' finish | (CCF1) Concrete, off form. Clear finish or to landscape architect specification | (LV1) Louvre Type 1: Clear fixed open glass louvre system similar to Breezway | (LV6) Louvre Type 6: Fixed vertical louvre system. Aluminium, finish to match PFS | (PC2) Precast Concrete Type 2: Precast Concrete. Finish: penetrating low maintenance stain finish equal to Kain concrete Laser system, to match PF1 | (PFS) Paint Finish Type 5: Finish to match Dulux 'Flax White' powder coat | (SC2) Screen Type 2: Architectural metal mesh screen to comply with Railcorp requirements |
| (BAL2) Balustrade Type 2: Semi-Framless clear glass balustrade fixed to solid spandrel parapet/wall. Framing system, finish to match PFS | (CL4) Cladding Type 4: FC cladding, colour to match PF3 | (GC1) Glass, clear, to Basix and Acoustic report requirements. Aluminium framing system, finish to match PFS | (LV2) Louvre Type 2: Acoustic/horizontal louvre system. Metal, timber effect finish | (LV7) Louvre Type 7: Fixed horizontal louvre system. Aluminium, finish to match PFS | (PF1) Paint Finish Type 1: Void White. Finish to match Dulux 'Natural White' | (PFS) Paint Finish Type 6: Finish to match Dulux 'Flooded Gull' | (SC3) Screen Type 3: Metal louvered screen with integrated planting at mechanical air intake. Colour to match PF4 |
| (BAL3) Balustrade Type 3: Vertical metal balustrade, powder coat finish to match PFS | (CL5) Cladding Type 5: Metal cladding, colour to match PF1 | (GC2) Glass, clear, Type 2: Glass, light bronze tinted, to Basix and Acoustic report requirements. Aluminium framing system, finish to match PF4 | (LV3) Louvre Type 3: Acoustic/horizontal louvre system. Metal powder coated finish to match PFS | (LV8) Louvre Type 8: Fixed vertical louvre system. Timber finish to match CL6 | (PF2) Paint Finish Type 2: Medium Beige. Finish to match Dulux 'Harvest' | (PFS) Paint Finish Type 7: Finish to match Dulux powder coat. 'Black Ace' | (SC4) Screen Type 4: Metal framed shedding structure with timber batten |
| (CL1) Cladding Type 1: Metal cladding, colour to match PF4 | (CL6) Cladding Type 6: Timber plastic composite cladding, acoustic lining to balcony sides and roof, 'torped' gull' finish | (GC3) Glass, Coloursback, Type 1: Glass, Light Bronze, to Basix and Acoustic report requirements. Aluminium framing system, finish to match PF4 | (LV4) Louvre Type 4: Fixed vertical louvre system. Aluminium, finish to match PF4 | (LV9) Louvre Type 9: Clear operable glass louvre system similar to Breezway | (PF3) Paint Finish Type 3: Dark Grey. Finish to match Dulux 'Domino' | (PFS) Paint Finish Type 8: Finish to match Dulux powder coat. 'Black Ace' | (BRK1) Brick Type 1: Face brick similar in colour to Bowral 'Shortform Mix' |
| (CL2) Cladding Type 2: Metal cladding, colour to match PFS | (CL7) Cladding Type 7: Polished stainless steel cladding | (GC3) Glass, Coloursback, Type 2: Glass, Dark Grey, to Basix and Acoustic report requirements. Aluminium framing system, finish to match PFS | (LV5) Louvre Type 5: Fixed vertical louvre system. Aluminium, finish to match PFS | (PC1) Precast Concrete Type 1: Precast Concrete. Finish: penetrating low maintenance stain finish equal to Kain concrete Laser system, to match PF1 | (PF4) Paint Finish Type 4: Finish to match Dulux 'Shimmering Champagne' powder coat | (SC1) Screen Type 1: Timber bottom fence, finish similar to Cedar | (BRK2) Brick Type 2: Glazed face brick to address landscaped areas, to future selection |

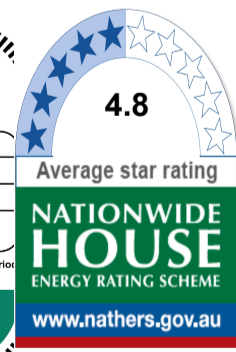
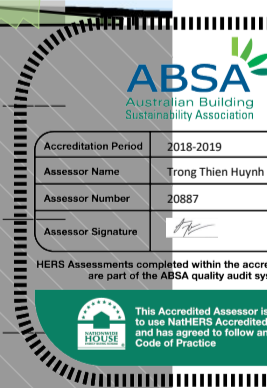
NOTES
THIS DRAWING IS THE COPYRIGHT © OF TURNER. NO REPRODUCTION WITHOUT PERMISSION. UNLESS NOTED OTHERWISE THIS DRAWING IS NOT FOR CONSTRUCTION. ALL DIMENSIONS AND LEVELS ARE TO BE CHECKED ON SITE PRIOR TO THE COMMENCEMENT OF WORK. IN THE EVENT OF ANY DISCREPANCIES FOR CLARIFICATION BEFORE PROCEEDING WITH WORK, DRAWINGS ARE NOT TO BE SCALED. USE ONLY DIMENSIONS PROVIDED. REFER TO CONSULTANT DOCUMENTATION FOR FURTHER INFORMATION.

DLG2 Quality Endorsed Company ISO 9001:2015, Registration Number 25475
Notified Architect: Nicholas Turner, 8895, ABA 88 664 084 911

BASIX

LEGEND

Rev. Date Approved by Revision Notes
A-S4.55 22.08.19 JM S4.55 Application



Certificate no.: 0004150710
Assessor Name: Trong Thien Huynh
Accreditation no.: 20887
Certificate date: 23 August 2019
Dwelling Address: Darcy Road, Hawkesbury Road WESTMEAD, NSW 2145
www.nathers.gov.au

CLIENT
Deicorp
Level 3, 161 Redfern Street, Redfern NSW 2016, Australia

Project Title
WSU - Lot 5
158-164 Hawkesbury Road, 2a Darcy Road Westmead NSW 2145 Australia

Drawing Title
GA Sections
Section AA
Scale
1:200 @A1, 50% @A3
Status
For Information
Project No.
16001
Dwg No.
DA-310-001
Drawn by
turner
Rev
A-S4.55

TURNER

L7, ONE Oxford Street
Darlinghurst NSW 2010
Australia
T +61 2 8668 0000
F +61 2 8668 0088
turner@turner.com.au



Elevation/ Section Legend

- (BAL1) Balustrade Type 1: Semi-Framed clear glass balustrade. Framing system, finish to match PF8.
(BAL2) Balustrade Type 2: Semi-Framed clear glass balustrade fixed to solid spandrel panel/parapet wall. Framing system, finish to match PF8.
(BAL3) Balustrade Type 3: Vertical metal balustrade, powder coat finish to match PF8.
(CL1) Cladding Type 1: Metal cladding, colour to match PF4.
(CL2) Cladding Type 2: Metal cladding, colour to match PF8.
(CL3) Cladding Type 3: Polished metal cladding, colour to match PF6.
(CL4) Cladding Type 4: FC cladding, colour to match PF3.
(CL5) Cladding Type 5: Metal cladding, colour to match PF1.
(CL6) Cladding Type 6: Timber plastic composite cladding, acoustic lining to balcony sides and walls, 'spotted gum' finish.
(CL7) Cladding Type 7: Polished stainless steel cladding.

- (COF) Concrete, off-form. Clear finish or to landscape architect specification.
(GC1) Glass, Clear, Type 1: Glass, Clear, to Basis and Acoustic report requirements. Aluminium framing system, finish to match PF8.
(GC2) Glass, Clear, Type 2: Glass, Clear, to Basis and Acoustic report requirements. Aluminium framing system, finish to match PF4.
(GC3) Glass, Coloured, Type 1: Glass, Coloured, to Basis and Acoustic report requirements. Aluminium framing system, finish to match PF4.
(GC4) Glass, Coloured, Type 2: Glass, Coloured, to Basis and Acoustic report requirements. Aluminium framing system, finish to match PF8.

- (LV1) Louvre Type 1: Clear fixed open glass louvre system similar to Brecoway.
(LV2) Louvre Type 2: Acoustic horizontal louvre system. Metal, timber effect finish.
(LV3) Louvre Type 3: Acoustic horizontal louvre system. Metal powder coated finish to match PF5.
(LV4) Louvre Type 4: Fixed vertical louvre system. Aluminium, finish to match PF4.
(LV5) Louvre Type 5: Fixed vertical louvre system. Aluminium, finish to match PF5.

- (LV6) Louvre Type 6: Fixed vertical louvre system. Aluminium, finish to match PF8.
(LV7) Louvre Type 7: Fixed horizontal louvre system. Aluminium, finish to match PF8.
(LV8) Louvre Type 8: Fixed vertical louvre system. Timber finish to match CL6.
(LV9) Louvre Type 9: Clear operable glass louvre system similar to Brecoway.
(PC1) Precast Concrete Type 1: Precast Concrete. Finish penetrating low maintenance stain finish equal to Kain concrete Laser system, to match PF1.

- (PC2) Precast Concrete Type 2: Precast Concrete. Finish penetrating low maintenance stain finish equal to Kain concrete Laser system, to match PF7.
(PF1) Paint Finish Type 1: Natural White. Finish to match Dulux 'Natural White'.
(PF2) Paint Finish Type 2: Medium Beige. Finish to match Dulux 'Harold'.
(PF3) Paint Finish Type 3: Dark Grey. Finish to match Dulux 'Domino'.
(PF4) Paint Finish Type 4: Finish to match Dulux Electro 'Shimmering Champagne' powder coat.

- (PF5) Paint Finish Type 5: Finish to match Dulux 'Flat White' powder coat.
(PF6) Paint Finish Type 6: Finish to match Dulux 'Flooded Gun'.
(PF7) Paint Finish Type 7: Finish to match PF8.
(PF8) Paint Finish Type 8: Finish to match Dulux powder coat 'Black Ace'.
(SC1) Screen Type 1: Timber batten fence, finish similar to Cedar.

- (SC2) Screen Type 2: Architectural metal mesh screen to comply with Ralcorp requirements.
(SC3) Screen Type 3: Metal louvre screen with integrated planting at mechanical air intake. Colour to match PF4.
(SC4) Screen Type 4: Metal framed shading structure with timber battens.
(BRK1) Brick Type 1: Face brick similar in colour to Boral 'Shortform Mix'.
(BRK2) Brick Type 2: Glazed face brick to address landscaped areas, to future selection.

NOTES

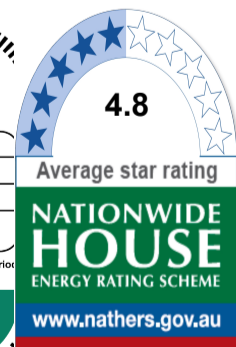
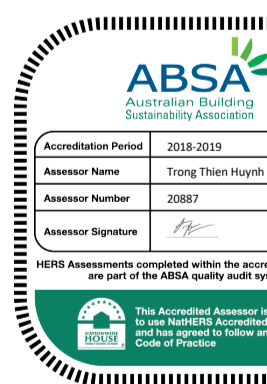
THIS DRAWING IS THE COPYRIGHT © OF TURNER. NO REPRODUCTION WITHOUT PERMISSION. UNLESS NOTED OTHERWISE THIS DRAWING IS NOT FOR CONSTRUCTION. ALL DIMENSIONS AND LEVELS ARE TO BE CHECKED ON SITE PRIOR TO THE COMMENCEMENT OF WORK. INFORM TURNER OF ANY DISCREPANCIES FOR CLARIFICATION BEFORE PROCEEDING WITH WORK. DRAWINGS ARE NOT TO BE SCALED. USE ONLY DIMENSIONS PROVIDED. REFER TO CONSULTANT DOCUMENTATION FOR FURTHER INFORMATION.

DL25 Quality Endorsed Company ISO 9001:2015, Registration Number 25475
Notified Architect: Nicholas Turner, 8895, ABA 88 664 084 911

BASIX

LEGEND

Rev.	Date	Approved by	Revision Notes
A-S4.55	22.08.19	JM	S4.55 Application



Certificate no.: 0004150710
Assessor Name: Trong Thien Huynh
Accreditation no.: 20887
Certificate date: 23 August 2019
Dwelling Address: Darcy Road, Hawkesbury Road
WESTMEAD, NSW 2145
www.nathers.gov.au
www.nathers.gov.au



CLIENT
Deicorp
Level 3, 161 Redfern Street, Redfern
NSW 2016, Australia

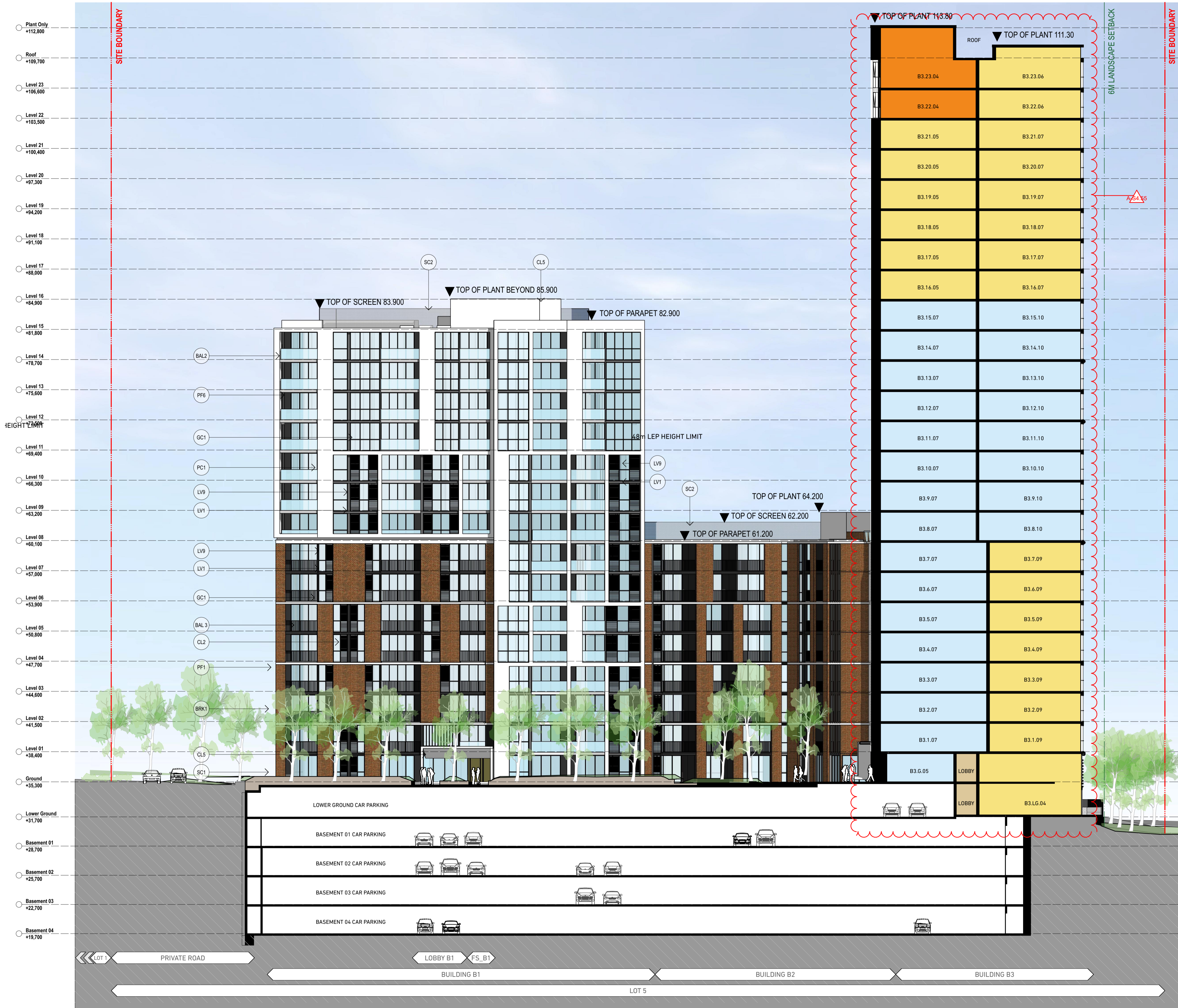
Project Title
WSU - Lot 5
158-164 Hawkesbury Road, 2a Darcy Road Westmead NSW 2145 Australia

Drawing Title
GA Sections
Section BB

Scale
1:200 @A1, 50% @A3
Project No.
16001
Drawn by
turner
Status
For Information
Dwg No.
DA-310-002
Rev.
A-S4.55

TURNER

L7, ONE Oxford Street
Darlinghurst NSW 2010
Australia
T +61 2 8668 0200
F +61 2 8668 0268
turner@turner.com.au



Elevation/ Section Legend

- BAL1 Balustrade Type 1:
Semi-Framed clear glass balustrade.
Framing system, finish to match PF3
- BAL2 Balustrade Type 2:
Semi-Framed clear glass balustrade fixed to
solid spigoted panel/parapet wall. Framing system,
finish to match PF3
- BAL3 Balustrade Type 3:
Vertical metal balustrade, powder coat finish to match
PF3
- CL1 Cladding Type 1:
Metal cladding, colour to match PF4
- CL2 Cladding Type 2:
Metal cladding, colour to match PF8

- CL3 Cladding Type 3:
Profiled metal cladding, colour to match PF6
- CL4 Cladding Type 4:
PC cladding, colour to match PF3
- CL5 Cladding Type 5:
Metal cladding, colour to match PF1
- CL6 Cladding Type 6:
Timber plastic composite cladding, acoustic lining to
balcony sides and soffit, 'spotted gum' finish
- CL7 Cladding Type 7:
Polished stainless steel cladding

- COF Concrete, off form
Clear finish or to landscape architect specification
- GC1 Glass, Clear, Type 1:
Glass, clear, to Bask and Acoustic report requirements.
Aluminium framing system, finish to match PF3
- GC2 Glass, Clear, Type 2:
Glass, light bronze tinted, to Bask and Acoustic report requirements.
Aluminium framing system, finish to match PF4
- GC3 Glass, Coloback, Type 1:
Glass, Light Bronze, to Bask and Acoustic report requirements.
Aluminium framing system, finish to match PF4
- GC4 Glass, Coloback, Type 2:
Glass, Dark Grey, to Bask and Acoustic report requirements.
Aluminium framing system, finish to match PF8

- LV1 Louvre Type 1:
Clear fixed open glass louvre system similar to Breweay
- LV2 Louvre Type 2:
Acoustic horizontal louvre system. Metal, timber effect finish
- LV3 Louvre Type 3:
Acoustic horizontal louvre system. Metal powder coated finish to
match PF3
- LV4 Louvre Type 4:
Fixed vertical louvre system. Aluminium, finish to match PF4
- LV5 Louvre Type 5:
Fixed vertical louvre system. Aluminium, finish to match PF5

- LV6 Louvre Type 6:
Fixed vertical louvre system. Aluminium, finish to match PF8
- LV7 Louvre Type 7:
Fixed horizontal louvre system. Aluminium, finish to match PF3
- LV8 Louvre Type 8:
Fixed vertical louvre system. Timber finish to match CL6
- LV9 Louvre Type 9:
Clear operable glass louvre system similar to Breweay
- PC1 Precast Concrete Type 1:
Precast Concrete. Finish: penetrating low maintenance
stain finish equal to Kern concrete Laser system, to match PF1

- PC2 Precast Concrete Type 2:
Precast Concrete. Finish: penetrating low maintenance
stain finish equal to Kern concrete Laser system, to match PF7
- PF1 Paint Finish Type 1:
Natural White
Finish to match Dulux 'Natural White'
- PF2 Paint Finish Type 2:
Medium Beige
Finish to match Dulux 'Harold'
- PF3 Paint Finish Type 3:
Dark Grey
Finish to match Dulux 'Domino'
- PF4 Paint Finish Type 4:
Fresh to match Dulux Electro 'Shimmering
Champagne' powder coat

- PF5 Paint Finish Type 5:
Finish to match Dulux 'Flat White' powder coat
- PF6 Paint Finish Type 6:
Finish to match Dulux 'Flooded Gun'
- PF7 Paint Finish Type 7:
Finish to match PF3
- PF8 Paint Finish Type 8:
Dark Grey
Finish to match Dulux powder coat 'Black Ac'
- SC1 Screen Type 1:
Timber batten fence, finish similar to Cedar

- SC2 Screen Type 2:
Architectural metal mesh screen to comply with Railcorp
requirements
- SC3 Screen Type 3:
Metal louvre screen with integrated planting at mechanical
air intake. Colour to match PF4
- SC4 Screen Type 4:
Metal framed cladding structure with timber battens
- BRK1 Brick Type 1:
Face brick similar in colour to Boral 'Shortform M'
- BRK2 Brick Type 2:
Glazed face brick to address landscaped areas, to future
selection

NOTES

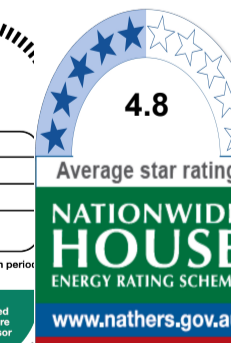
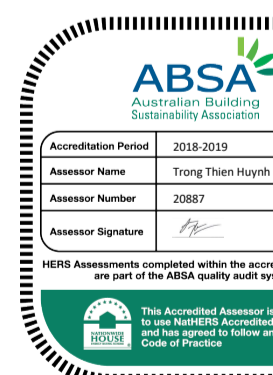
THIS DRAWING IS THE COPYRIGHT © OF TURNER. NO REPRODUCTION WITHOUT PERMISSION. UNLESS NOTED OTHERWISE THIS
DRAWING IS NOT FOR CONSTRUCTION. ALL DIMENSIONS AND LEVELS ARE TO BE CHECKED ON SITE. PRIOR TO THE COMMENCEMENT
OF WORK. INFORM TURNER OF ANY DISCREPANCIES FOR CLARIFICATION BEFORE PROCEEDING WITH WORK. DRAWINGS ARE NOT TO
BE SCALED. USE ONLY FIGURED DIMENSIONS. REFER TO CONSULTANT DOCUMENTATION FOR FURTHER INFORMATION.

DL25 Quality Endorsed Company ISO 9001:2008, Registration Number 25475
Notified Architect: Nicholas Turner, 8895, ABA 88 064 084 911

BASIX

LEGEND

Rev. Date Approved by Revision Notes
A-S4.55 22.08.19 JM S4.55 Application



Certificate no.: 0004150710
Assessor Name: Trong Thien Huynh
Accreditation no.: 20887
Certificate date: 23 August 2019
Dwelling Address: Darcy Road, Hawkesbury Road
WESTMEAD, NSW
2145
www.nathers.gov.au
www.nathers.gov.au

CLIENT
Deicorp
Level 3, 161 Redfern Street, Redfern
NSW 2016, Australia

Project Title
WSU - Lot 5
158-164 Hawkesbury Road, 2a Darcy Road Westmead NSW 2145 Australia

Drawing Title

GA Sections

Section CC

Scale
1:200 @A1, 50%@A3
Status
For Information

Project No. 16001
Dwg No. DA-310-003
Revision Notes
JM S4.55 Application

Drawn by turner
Rev. A-S4.55

TURNER

L7, ONE Oxford Street
Darlinghurst NSW 2010
Australia

T +61 2 8668 0000
F +61 2 8668 0088
turner@turner.com.au



WINTER SOLSTICE JUNE 21ST

9:00 AM



WINTER SOLSTICE JUNE 21ST

10:00 AM



WINTER SOLSTICE JUNE 21ST

11:00 AM



WINTER SOLSTICE JUNE 21ST

12:00 PM

NOTES
THIS DRAWING IS THE COPYRIGHT © OF TURNER. NO REPRODUCTION WITHOUT PERMISSION. UNLESS NOTED OTHERWISE THIS DRAWING IS NOT FOR CONSTRUCTION. ALL DIMENSIONS AND LEVELS ARE TO BE CHECKED ON SITE PRIOR TO THE COMMENCEMENT OF WORK. IN THE EVENT OF ANY DISCREPANCIES FOR CLARIFICATION BEFORE PROCEEDING WITH WORK, DRAWINGS ARE NOT TO BE SCALED. USE ONLY FIGURED DIMENSIONS. REFER TO CONSULTANT DOCUMENTATION FOR FURTHER INFORMATION.

DLGS Quality Endorsed Company ISO 9001:2008, Registration Number 28475
Notified Architect: Nicholas Turner, 8695, ABA 86 064 084 911

BASIC

LEGEND

Rev.	Date	Approved by	Revision Notes
A-S4.55	09.08.19	JM	S4.55 Application

CLIENT
Deicorp
Level 3, 161 Redfern Street, Redfern
NSW 2016, Australia

Project Title
WSU - Lot 5
158-164 Hawkesbury Road, 2a Darcy Road Westmead NSW 2145 Australia

Drawing Title
Solar and Cross Ventilation Diagrams
Sun Eye View Diagram Sheet 1

Scale 1:6.72 @A1, 50% @A3	Project No. 16001	Drawn by turner	North
Status For Information	Dwg No. DA-730-010	Rev. A-S4.55	

TURNER

L7, ONE Oxford Street
Darlington NSW 2010
Australia
T +61 2 8668 0000
F +61 2 8668 0088
turnerstudio.com.au



WINTER SOLSTICE JUNE 21ST

1:00 PM



WINTER SOLSTICE JUNE 21ST

2:00 PM



WINTER SOLSTICE JUNE 21ST

3:00AM

NOTES
THIS DRAWING IS THE COPYRIGHT © OF TURNER. NO REPRODUCTION WITHOUT PERMISSION. UNLESS NOTED OTHERWISE THIS DRAWING IS NOT FOR CONSTRUCTION. ALL DIMENSIONS AND LEVELS ARE TO BE CHECKED ON SITE PRIOR TO THE COMMENCEMENT OF WORK. INFORM TURNER OF ANY DISCREPANCIES FOR CLARIFICATION BEFORE PROCEEDING WITH WORK. DRAWINGS ARE NOT TO BE SCALED. USE ONLY FIGURED DIMENSIONS. REFER TO CONSULTANT DOCUMENTATION FOR FURTHER INFORMATION.

DLCS Quality Endorsed Company ISO 9001:2008, Registration Number 28475
Notified Architect: Nicholas Turner, 8695, ABA 86 064 084 911

BASIC

LEGEND

Rev.	Date	Approved by	Revision Notes
A-S4.55	09.08.19	JM	S4.55 Application

CLIENT
Deicorp
Level 3, 161 Redfern Street, Redfern
NSW 2016, Australia

Project Title
WSU - Lot 5
158-164 Hawkesbury Road, 2a Darcy Road Westmead NSW 2145 Australia

Drawing Title			
Solar and Cross Ventilation Diagrams Sun Eye View Diagram Sheet 2			
Scale	Project No.	Drawn by	North
1:6.72 @A1, 50% @A3	16001	turner	
Status	Dwg No.	Rev.	
For Information	DA-730-020	A-S4.55	

TURNER

L7, ONE Oxford Street
Darlinghurst NSW 2010
Australia
T +61 2 8668 0000
F +61 2 8668 0088
turnerstudio.com.au



Approved DA - View of the Building B1 lobby entry and the Ground Floor podium courtyard beyond.



Proposed S4.55 - View of the Building B1 lobby entry and the Ground Floor podium courtyard beyond.

NOTES
THIS DRAWING IS THE COPYRIGHT © OF TURNER. NO REPRODUCTION WITHOUT PERMISSION. UNLESS NOTED OTHERWISE THIS
DRAWING IS NOT FOR CONSTRUCTION. ALL DIMENSIONS AND LEVELS ARE TO BE CHECKED ON SITE. PRIOR TO THE COMMENCEMENT
OF WORK. INFORM TURNER OF ANY DISCREPANCIES FOR CLARIFICATION BEFORE PROCEEDING WITH WORK. DRAWINGS ARE NOT TO
BE SCALED. USE ONLY FIGURED DIMENSIONS. REFER TO CONSULTANT DOCUMENTATION FOR FURTHER INFORMATION.

DLGS Quality Endorsed Company ISO 9001:2008, Registration Number 28476
Notified Architect: Nicholas Turner, 8695, ABA 86 064 084 911

BASIX

LEGEND

Rev.	Date	Approved by	Revision Notes
A-S4.55	22.08.19	JM	S4.55 Application

CLIENT
Deicorp
Level 3, 161 Redfern Street, Redfern
NSW 2016, Australia

Project Title
WSU - Lot 5
158-164 Hawkesbury Road, 2a Darcy Road Westmead NSW 2145 Australia

Drawing Title
**3D Views
Perspective Sheet 7**

Scale 1:1, 1:3.40 @A1, 50%@A3	Project No. 16001	Drawn by turner	North
Status For Information	Dwg No. DA-910-007	Rev. A-S4.55	

TURNER

L7, ONE Oxford Street
Darlington NSW 2010
Australia
T +61 2 8668 0000
F +61 2 8668 0088
turnerstudio.com.au



Approved DA - View of the Building B2 lobby entry and the Ground Floor podium courtyard.



Proposed S4.55 - View of the Building B2 lobby entry and the Ground Floor podium courtyard.

NOTES
THIS DRAWING IS THE COPYRIGHT © OF TURNER. NO REPRODUCTION WITHOUT PERMISSION. UNLESS NOTED OTHERWISE THIS
DRAWING IS NOT FOR CONSTRUCTION. ALL DIMENSIONS AND LEVELS ARE TO BE CHECKED ON SITE. PRIOR TO THE COMMENCEMENT
OF WORK. INFORM TURNER OF ANY DISCREPANCIES FOR CLARIFICATION BEFORE PROCEEDING WITH WORK. DRAWINGS ARE NOT TO
BE SCALED. USE ONLY FIGURED DIMENSIONS. REFER TO CONSULTANT DOCUMENTATION FOR FURTHER INFORMATION.

DLCS Quality Endorsed Company ISO 9001:2008, Registration Number 25475
Notified Architect: Nicholas Turner, 8695, ABN 86 064 084 911

BASIX

LEGEND

Rev.	Date	Approved by	Revision Notes
A-S4.55	22.08.19	JM	S4.55 Application

CLIENT
Deicorp
Level 3, 161 Redfern Street, Redfern
NSW 2016, Australia

Project Title
WSU - Lot 5
158-164 Hawkesbury Road, 2a Darcy Road Westmead NSW 2145 Australia

Drawing Title
3D Views
Perspective Sheet 8

Scale	Project No.	16001	Drawn by	turner	North
1:1.02, 1:4.78 @A1, 50% @A3	Dwg No.	A-910-008	Rev.	A-S4.55	
Status	For Information				

TURNER

L7, ONE Oxford Street
Darlington NSW 2010
Australia
T +61 2 8668 0000
F +61 2 8668 0088
turnerstudio.com.au



Approved DA - View of the Building B2 lobby entry.



Proposed S4.55 - View of the Building B2 lobby entry.

NOTES
THIS DRAWING IS THE COPYRIGHT © OF TURNER. NO REPRODUCTION WITHOUT PERMISSION. UNLESS NOTED OTHERWISE THIS
DRAWING IS NOT FOR CONSTRUCTION. ALL DIMENSIONS AND LEVELS ARE TO BE CHECKED ON SITE. PRIOR TO THE COMMENCEMENT
OF WORK. INFORM TURNER OF ANY DISCREPANCIES FOR CLARIFICATION BEFORE PROCEEDING WITH WORK. DRAWINGS ARE NOT TO
BE SCALED. USE ONLY FIGURED DIMENSIONS. REFER TO CONSULTANT DOCUMENTATION FOR FURTHER INFORMATION.

DLCS Quality Endorsed Company ISO 9001:2008, Registration Number 28475
Notified Architect: Nicholas Turner, 8895, ABN 88 064 084 911

BASIX

LEGEND

Rev.	Date	Approved by	Revision Notes
A-S4.55	22.08.19	JM	S4.55 Application

CLIENT
Deicorp
Level 3, 161 Redfern Street, Redfern
NSW 2016, Australia

Project Title
WSU - Lot 5
158-164 Hawkesbury Road, 2a Darcy Road Westmead NSW 2145 Australia

Drawing Title
3D Views
Perspective Sheet 9

Scale	Project No.	16001	Drawn by	North
1:1, 1:4.68 @A1, 50% @A3			turner	
Status	Dwg No.	DA-910-009	Rev.	A-S4.55
For Information				

TURNER

L7, ONE Oxford Street
Darlington NSW 2010
Australia

T +61 2 8668 0000
F +61 2 8668 0066
turnerstudio.com.au



Approved DA - View of Lot 5 from the east from the Marist Brother's Playing Fields.



Proposed S4.55 - View of Lot 5 from the east from the Marist Brother's Playing Fields.

NOTES
THIS DRAWING IS THE COPYRIGHT © OF TURNER. NO REPRODUCTION WITHOUT PERMISSION. UNLESS NOTED OTHERWISE THIS DRAWING IS NOT FOR CONSTRUCTION. ALL DIMENSIONS AND LEVELS ARE TO BE CHECKED ON SITE PRIOR TO THE COMMENCEMENT OF WORK. INFORM TURNER OF ANY DISCREPANCIES FOR CLARIFICATION BEFORE PROCEEDING WITH WORK. DRAWINGS ARE NOT TO BE SCALED. USE ONLY FIGURED DIMENSIONS. REFER TO CONSULTANT DOCUMENTATION FOR FURTHER INFORMATION.

DLCS Quality Endorsed Company ISO 9001:2008, Registration Number 28475
Notified Architect: Nicholas Turner, 8695, ABN 88 664 084 911

BASIX

LEGEND

Rev.	Date	Approved by	Revision Notes
A-S4.55	22.08.19	JM	S4.55 Application

CLIENT
Deicorp
Level 3, 161 Redfern Street, Redfern
NSW 2016, Australia

Project Title
WSU - Lot 5
158-164 Hawkesbury Road, 2a Darcy Road Westmead NSW 2145 Australia

Drawing Title			
3D Views Perspective Sheet 10			
Scale	Project No.	Drawn by	North
1:1, 1:3, 1:5, 75 @A1, 50% @A3	16001	turner	
Status	Dwg No.	Rev.	
For Information	DA-910-010	A-S4.55	

TURNER

L7, ONE Oxford Street
Darlington NSW 2010
Australia
T +61 2 8668 0000
F +61 2 8668 0088
turnerstudio.com.au



Approved DA - View of the lobby entries to Buildings A1 & B3.



Proposed S4.55 - View of the lobby entries to Buildings A1 & B3.

NOTES
THIS DRAWING IS THE COPYRIGHT © OF TURNER. NO REPRODUCTION WITHOUT PERMISSION. UNLESS NOTED OTHERWISE THIS
DRAWING IS NOT FOR CONSTRUCTION. ALL DIMENSIONS AND LEVELS ARE TO BE CHECKED ON SITE. PRIOR TO THE COMMENCEMENT
OF WORK. INFORM TURNER OF ANY DISCREPANCIES FOR CLARIFICATION BEFORE PROCEEDING WITH WORK. DRAWINGS ARE NOT TO
BE SCALED. USE ONLY FIGURED DIMENSIONS. REFER TO CONSULTANT DOCUMENTATION FOR FURTHER INFORMATION.

DLCS Quality Endorsed Company ISO 9001:2008, Registration Number 28475
Notified Architect: Nicholas Turner, 8695, ABA 86 064 084 911

BASIX

LEGEND

Rev.	Date	Approved by	Revision Notes
A-S4.55	22.08.19	JM	S4.55 Application

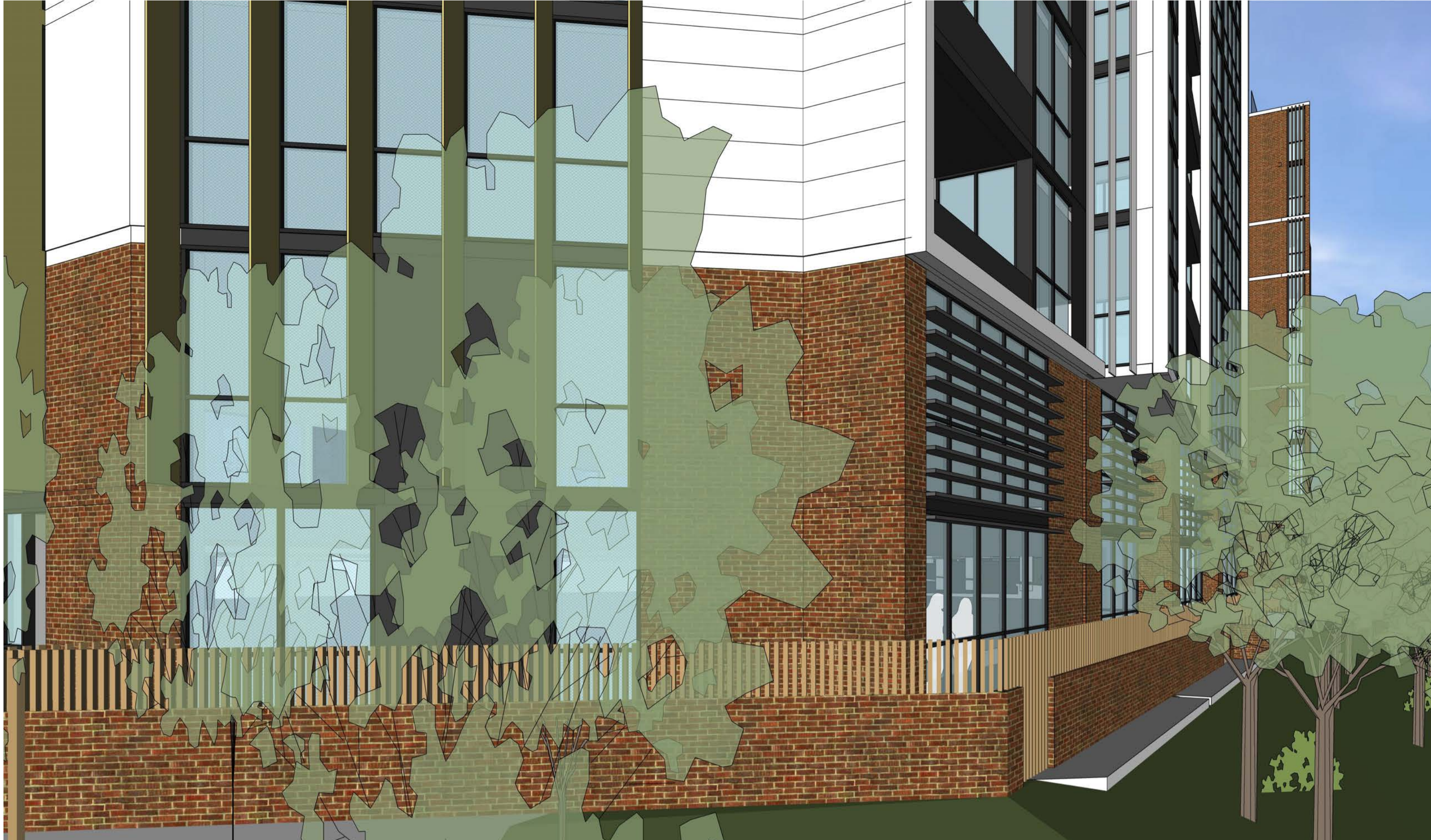
CLIENT
Deicorp
Level 3, 161 Redfern Street, Redfern
NSW 2016, Australia

Project Title
WSU - Lot 5
158-164 Hawkesbury Road, 2a Darcy Road Westmead NSW 2145 Australia

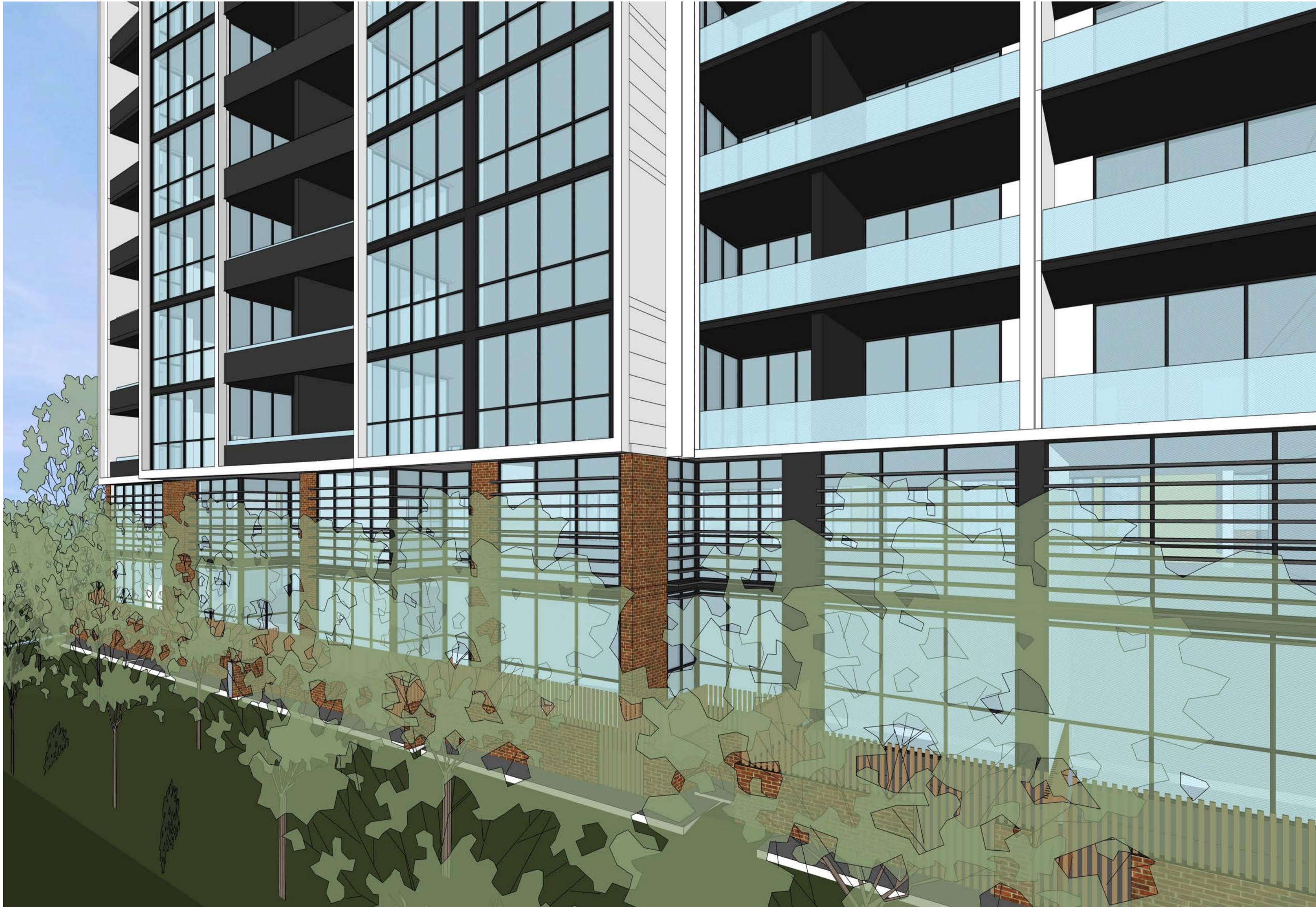
Drawing Title			
3D Views Perspective Sheet 11			
Scale	Project No.	16001	Drawn by
1:1, 1:5, 1:2 @A1, 50% @A3			turner
Status	Dwg No.	Rev.	North
For Information	DA-910-011	A-S4.55	

TURNER

L7, ONE Oxford Street
Darlington NSW 2010
Australia
T +61 2 8668 0000
F +61 2 8668 0088
turnerstudio.com.au



Proposed S4.55 - View from the North on Lower Ground to Building B3 with Building B2 beyond.



Proposed S4.55 - View from Marist Brother Playing Fields to Building B3.

NOTES
THIS DRAWING IS THE COPYRIGHT © OF TURNER. NO REPRODUCTION WITHOUT PERMISSION. UNLESS NOTED OTHERWISE THIS DRAWING IS NOT FOR CONSTRUCTION. ALL DIMENSIONS AND LEVELS ARE TO BE CHECKED ON SITE. PRIOR TO THE COMMENCEMENT OF WORK. INFORM TURNER OF ANY DISCREPANCIES FOR CLARIFICATION BEFORE PROCEEDING WITH WORK. DRAWINGS ARE NOT TO BE SCALED. USE ONLY FIGURED DIMENSIONS. REFER TO CONSULTANT DOCUMENTATION FOR FURTHER INFORMATION.

DLCS Quality Endorsed Company ISO 9001:2008, Registration Number 28475
Notified Architect: Nicholas Turner, 8895, AEN 88 664 084 911

BASIX

LEGEND

Rev.	Date	Approved by	Revision Notes
A-S4.55	22.08.19	JM	S4.55 Application

CLIENT
Deicorp
Level 3, 161 Redfern Street, Redfern
NSW 2016, Australia

Project Title
WSU - Lot 5
158-164 Hawkesbury Road, 2a Darcy Road Westmead NSW 2145 Australia

Drawing Title	Project No.	Drawn by	North
3D Views Perspective Sheet 12	16001	turner	
Scale 1:4.42, 1:4.52 @A1, 50%@A3	Dwg No. DA-910-012	Rev. A-S4.55	
Status For Information			

TURNER

L7, ONE Oxford Street
Darlinghurst NSW 2010
Australia
T +61 2 8668 0000
F +61 2 8668 0088
turnerstudio.com.au



Proposed S4.55 - View from the north looking across Building A to Building B.



Proposed S4.55 - Western facade looking up at Building B3.

NOTES
THIS DRAWING IS THE COPYRIGHT © OF TURNER. NO REPRODUCTION WITHOUT PERMISSION. UNLESS NOTED OTHERWISE THIS DRAWING IS NOT FOR CONSTRUCTION. ALL DIMENSIONS AND LEVELS ARE TO BE CHECKED ON SITE. PRIOR TO THE COMMENCEMENT OF WORK. IN THE EVENT OF ANY DISCREPANCIES FOR CLARIFICATION BEFORE PROCEEDING WITH WORK. DRAWINGS ARE NOT TO BE SCALED. USE ONLY FIGURED DIMENSIONS. REFER TO CONSULTANT DOCUMENTATION FOR FURTHER INFORMATION.

DLCS Quality Endorsed Company ISO 9001:2008, Registration Number 28475
Notified Architect: Nicholas Turner, 8895, ABA 88 664 084 911

BASIX

LEGEND

Rev.	Date	Approved by	Revision Notes
A-S4.55	22.08.19	JM	S4.55 Application

CLIENT
Deicorp
Level 3, 161 Redfern Street, Redfern
NSW 2016, Australia

Project Title
WSU - Lot 5
158-164 Hawkesbury Road, 2a Darcy Road Westmead NSW 2145 Australia

Drawing Title			
3D Views Perspective Sheet 13			
Scale	Project No.	Drawn by	North
1:6.12 @A1, 50% @A3	16001	turner	
Status	Dwg No.	Rev.	
For Information	DA-910-013	A-S4.55	

TURNER

L7, ONE Oxford Street
Darlington NSW 2010
Australia
T +61 2 8668 0000
F +61 2 8668 0088
turnerstudio.com.au



Approved DA - South east view



Proposed S4.55 - South east view

NOTES
THIS DRAWING IS THE COPYRIGHT © OF TURNER. NO REPRODUCTION WITHOUT PERMISSION. UNLESS NOTED OTHERWISE THIS DRAWING IS NOT FOR CONSTRUCTION. ALL DIMENSIONS AND LEVELS ARE TO BE CHECKED ON SITE PRIOR TO THE COMMENCEMENT OF WORK. INFORM TURNER OF ANY DISCREPANCIES FOR CLARIFICATION BEFORE PROCEEDING WITH WORK. DRAWINGS ARE NOT TO BE SCALED. USE ONLY FIGURED DIMENSIONS. REFER TO CONSULTANT DOCUMENTATION FOR FURTHER INFORMATION.

DLCS Quality Endorsed Company ISO 9001:2008, Registration Number 28475
Notified Architect: Nicholas Turner, 8695, ABA 86 064 084 911

BASIX

LEGEND

Rev.	Date	Approved by	Revision Notes
A-S4.55	26.08.19	JM	S4.55 Application

CLIENT
Deicorp
Level 3, 161 Redfern Street, Redfern
NSW 2016, Australia

Project Title
WSU - Lot 5
158-164 Hawkesbury Road, 2a Darcy Road Westmead NSW 2145 Australia

Drawing Title
3D Views
Perspective Sheet 14

Scale @A1, 50%@A3	Project No. 16001	Drawn by turner	North
Status For Information	Dwg No. DA-910-014	Rev. A-S4.55	

TURNER

L7, ONE Oxford Street
Darlinghurst NSW 2010
Australia
T +61 2 8668 0000
F +61 2 8668 0088
turnerstudio.com.au



Approved DA - South view of Building B



Proposed S4.55 - South east view

NOTES
THIS DRAWING IS THE COPYRIGHT © OF TURNER. NO REPRODUCTION WITHOUT PERMISSION. UNLESS NOTED OTHERWISE THIS DRAWING IS NOT FOR CONSTRUCTION. ALL DIMENSIONS AND LEVELS ARE TO BE CHECKED ON SITE. PRIOR TO THE COMMENCEMENT OF WORK. INFORM TURNER OF ANY DISCREPANCIES FOR CLARIFICATION BEFORE PROCEEDING WITH WORK. DRAWINGS ARE NOT TO BE SCALED. USE ONLY PICTURED DIMENSIONS. REFER TO CONSULTANT DOCUMENTATION FOR FURTHER INFORMATION.

DLCS Quality Endorsed Company ISO 9001:2008, Registration Number 28475
Notified Architect: Nicholas Turner, 8695, AEN 86 064 084 911

BASIX

LEGEND

Rev.	Date	Approved by	Revision Notes
A-S4.55	26.08.19	JM	S4.55 Application

CLIENT
Deicorp
Level 3, 161 Redfern Street, Redfern
NSW 2016, Australia

Project Title
WSU - Lot 5
158-164 Hawkesbury Road, 2a Darcy Road Westmead NSW 2145 Australia

Drawing Title
3D Views
Perspective Sheet 15

Scale @A1, 50%@A3	Project No. 16001	Drawn by turner	North
Status For Information	Dwg No. DA-910-015	Rev. A-S4.55	

TURNER
L7, ONE Oxford Street
Darlinghurst NSW 2010
Australia
T +61 2 8668 0000
F +61 2 8668 0088
turnerstudio.com.au



Approved DA - View of Building A and B from reserve



Proposed S4.55 - View of Building A and B from reserve

NOTES
THIS DRAWING IS THE COPYRIGHT © OF TURNER. NO REPRODUCTION WITHOUT PERMISSION. UNLESS NOTED OTHERWISE THIS DRAWING IS NOT FOR CONSTRUCTION. ALL DIMENSIONS AND LEVELS ARE TO BE CHECKED ON SITE PRIOR TO THE COMMENCEMENT OF WORK. IN THE EVENT OF ANY DISCREPANCIES FOR CLARIFICATION BEFORE PROCEEDING WITH WORK, DRAWINGS ARE NOT TO BE SCALED. USE ONLY FIGURED DIMENSIONS. REFER TO CONSULTANT DOCUMENTATION FOR FURTHER INFORMATION.

DLCS Quality Endorsed Company ISO 9001:2015, Registration Number 25475
Notified Architect: Nicholas Turner, 8695, AEN 86 064 084 911

BASIX

LEGEND

Rev.	Date	Approved by	Revision Notes
A-S4.55	26.08.19	JM	S4.55 Application

CLIENT
Deicorp
Level 3, 161 Redfern Street, Redfern
NSW 2016, Australia

Project Title
WSU - Lot 5
158-164 Hawkesbury Road, 2a Darcy Road Westmead NSW 2145 Australia

Drawing Title			
3D Views Perspective Sheet 16			
Scale	Project No.	Drawn by	North
@A1, 50% @A3	16001	turner	
Status	Dwg No.	Rev.	
For Information	DA-910-016	A-S4.55	

TURNER

L7, ONE Oxford Street
Darlington NSW 2010
Australia
T +61 2 8668 0000
F +61 2 8668 0088
turnerstudio.com.au



Approved DA - South west view of Building B



Proposed S4.55 - South west view of Building B

NOTES
THIS DRAWING IS THE COPYRIGHT © OF TURNER. NO REPRODUCTION WITHOUT PERMISSION. UNLESS NOTED OTHERWISE THIS DRAWING IS NOT FOR CONSTRUCTION. ALL DIMENSIONS AND LEVELS ARE TO BE CHECKED ON SITE PRIOR TO THE COMMENCEMENT OF WORK. IN THE EVENT OF ANY DISCREPANCIES FOR CLARIFICATION BEFORE PROCEEDING WITH WORK. DRAWINGS ARE NOT TO BE SCALED. USE ONLY FIGURED DIMENSIONS. REFER TO CONSULTANT DOCUMENTATION FOR FURTHER INFORMATION.

DLCS Quality Endorsed Company ISO 9001:2008, Registration Number 28475
Notified Architect: Nicholas Turner, 8895, ABA 88 664 084 911

BASIX

LEGEND

Rev.	Date	Approved by	Revision Notes
A-S4.55	26.08.19	JM	S4.55 Application

CLIENT
Deicorp
Level 3, 161 Redfern Street, Redfern
NSW 2016, Australia

Project Title
WSU - Lot 5
158-164 Hawkesbury Road, 2a Darcy Road Westmead NSW 2145 Australia

Drawing Title			
3D Views Perspective Sheet 17			
Scale	Project No.	Drawn by	North
@A1, 50% @A3	16001	turner	
Status	Dwg No.	Rev.	
For Information	DA-910-017	A-S4.55	

TURNER

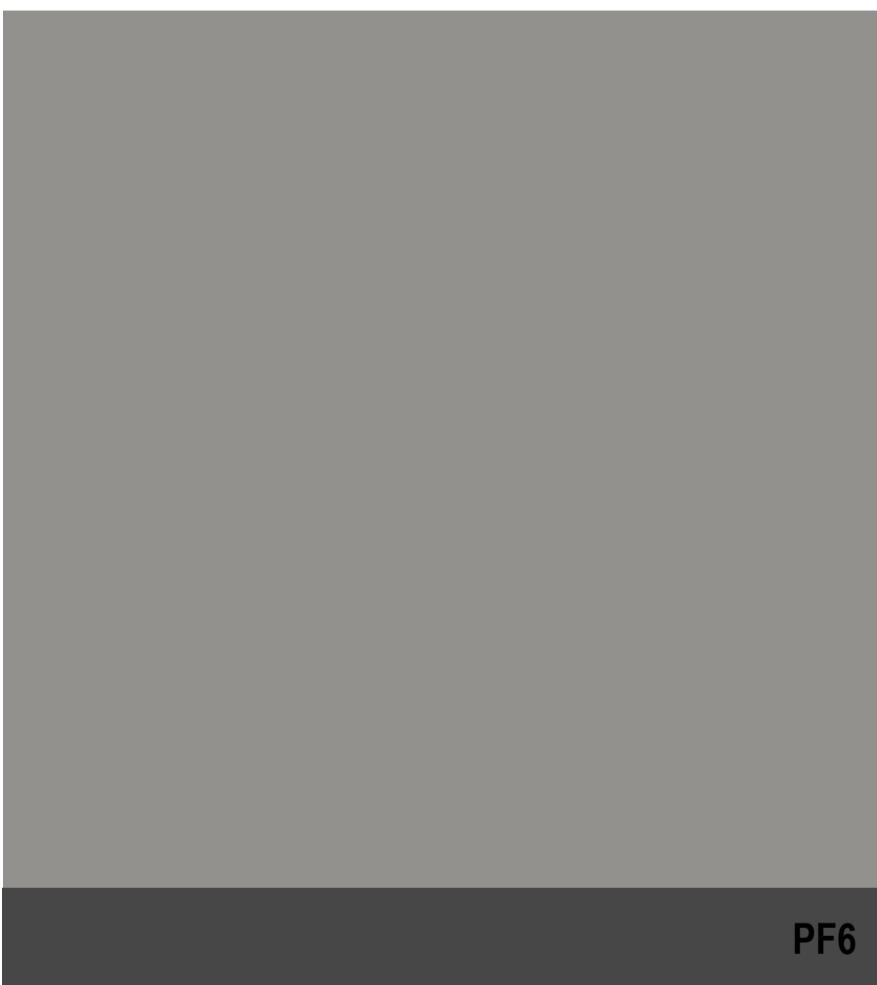
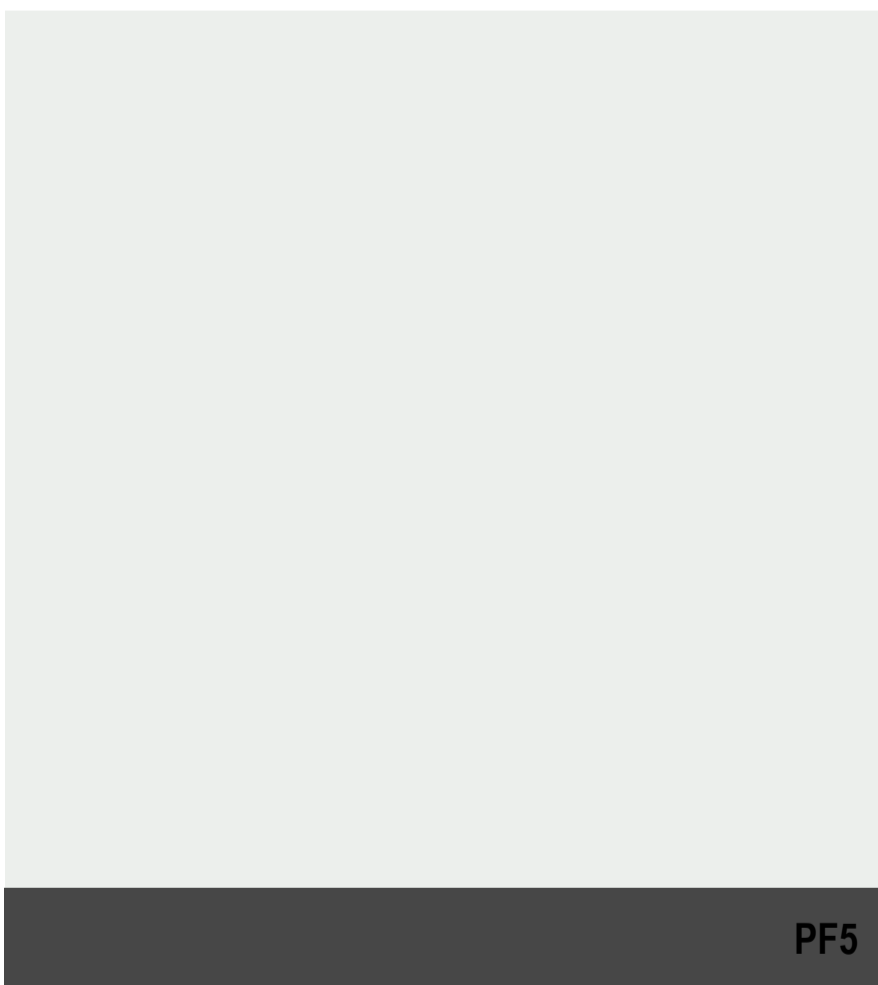
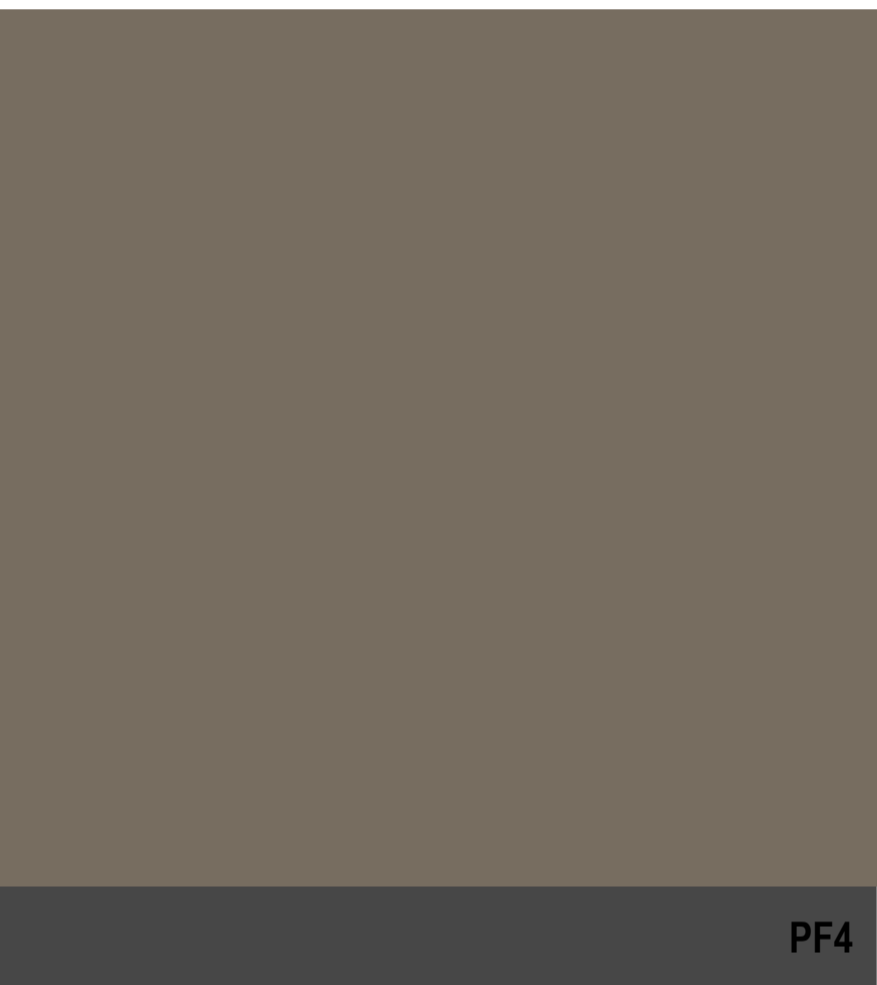
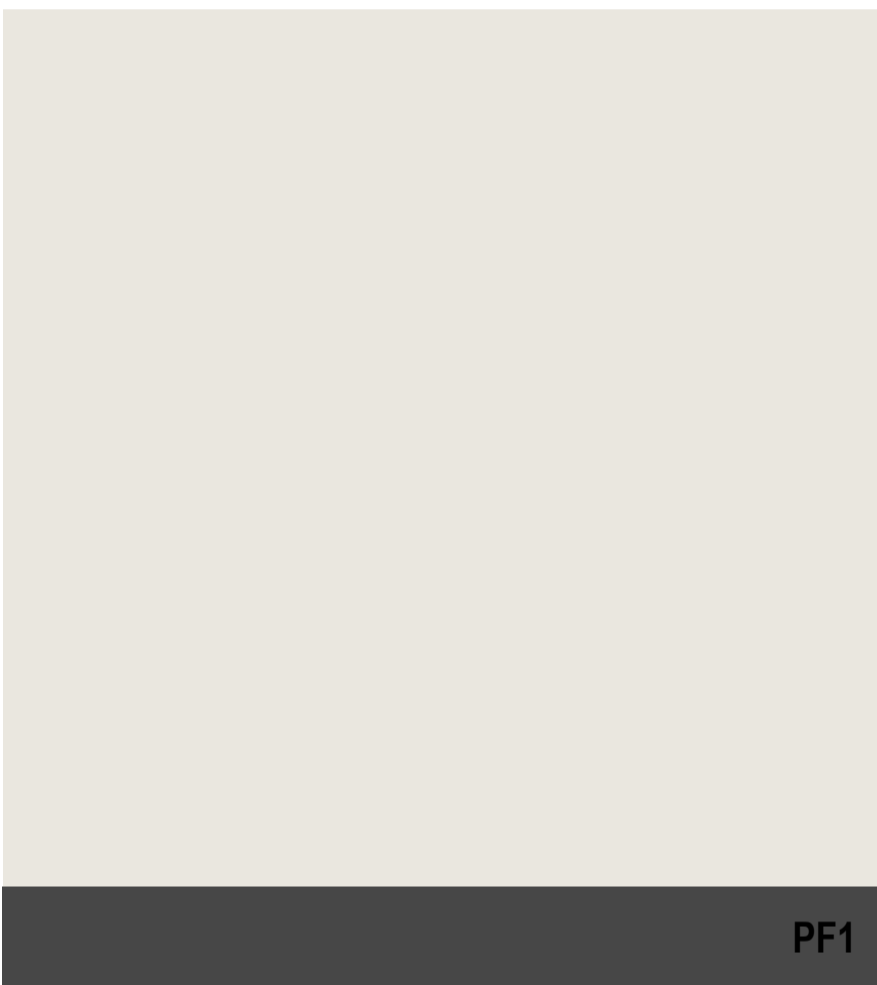
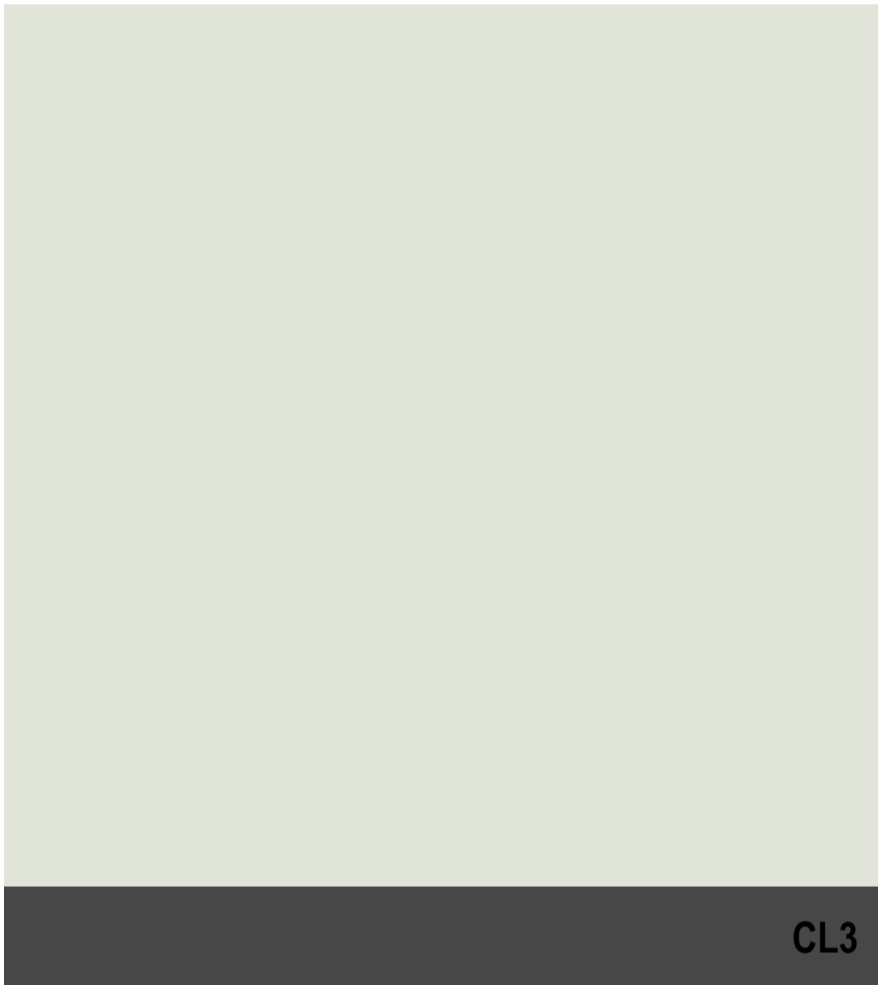
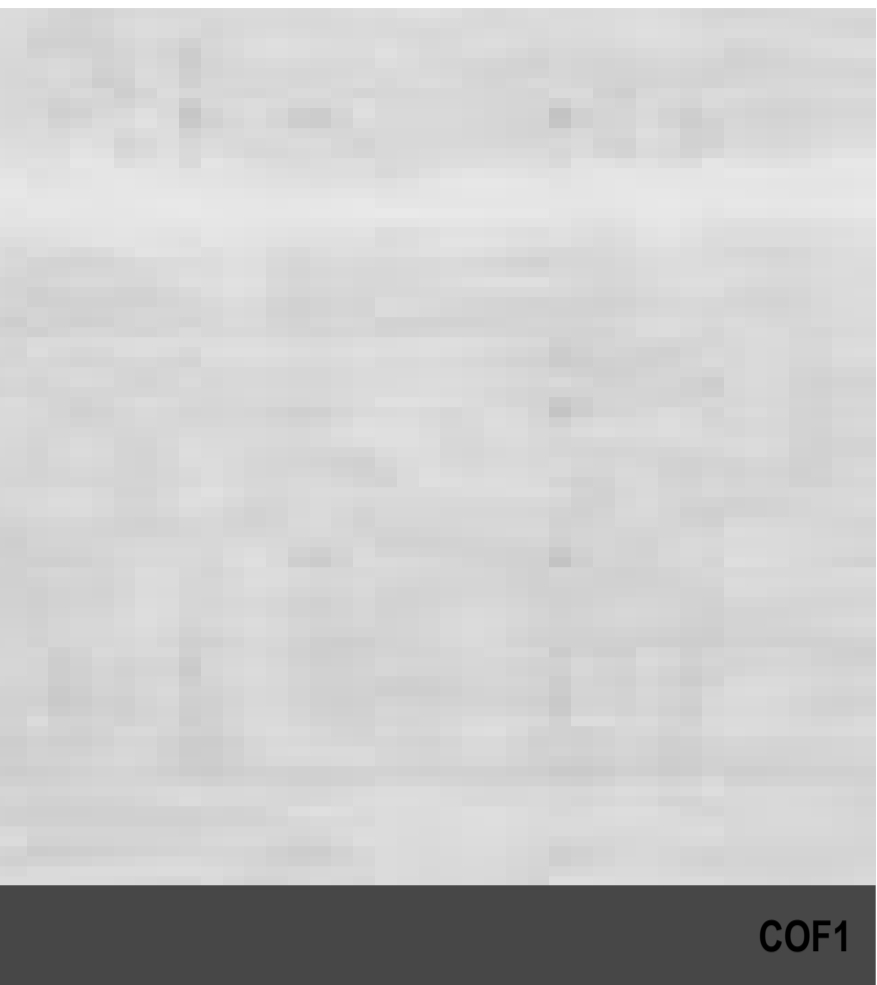
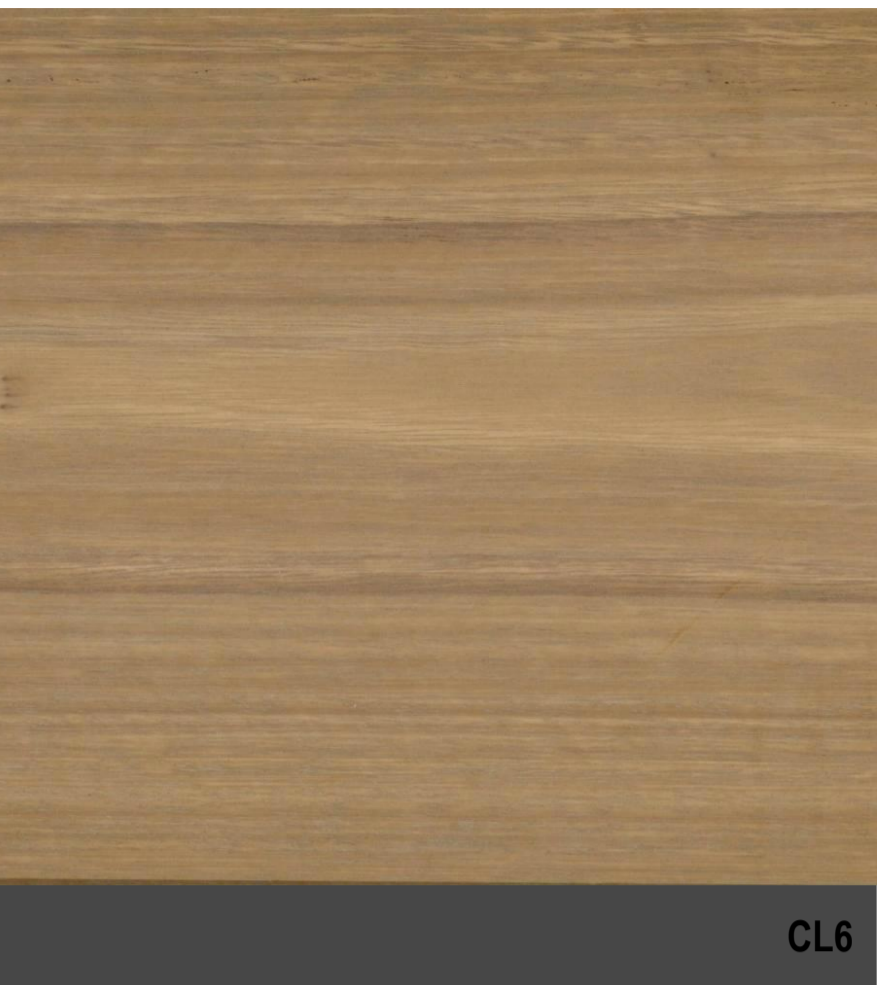
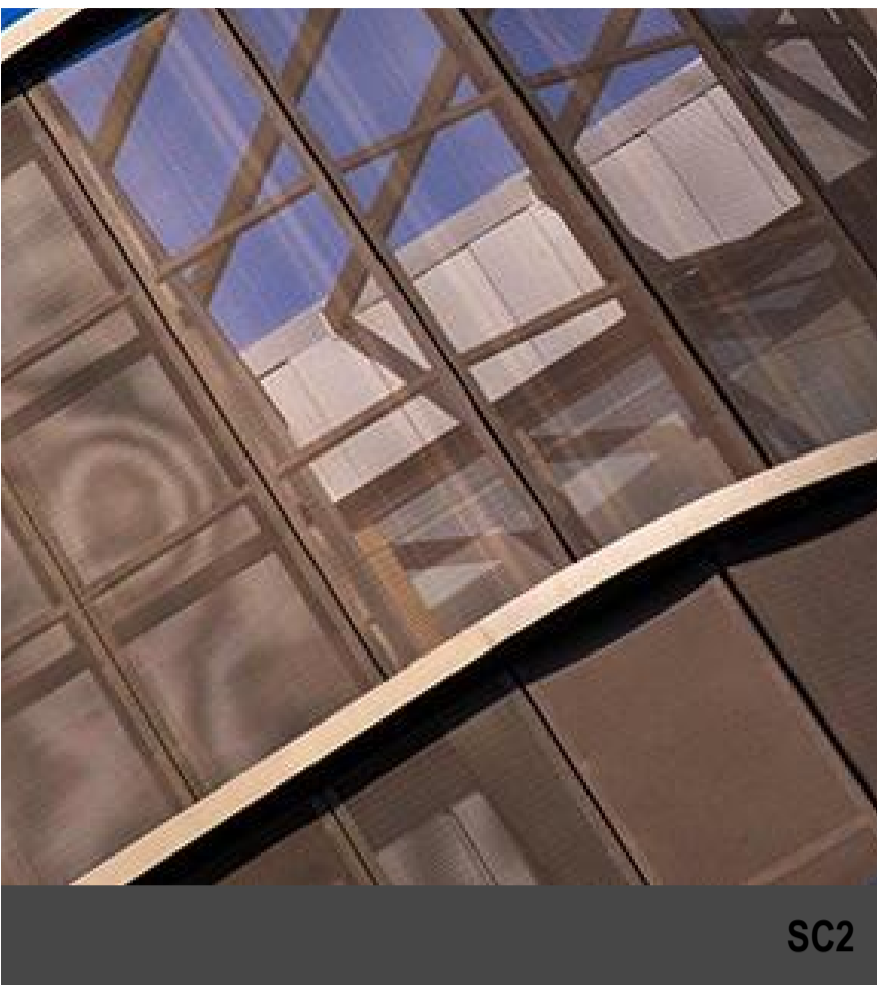
L7, ONE Oxford Street
Darlington NSW 2010
Australia
T +61 2 8668 0000
F +61 2 8668 0088
turnerstudio.com.au

NOTES
THIS DRAWING IS THE COPYRIGHT © OF TURNER. NO REPRODUCTION WITHOUT PERMISSION. UNLESS NOTED OTHERWISE THIS DRAWING IS NOT FOR CONSTRUCTION. ALL DIMENSIONS AND LEVELS ARE TO BE CHECKED ON SITE PRIOR TO THE COMMENCEMENT OF WORK. IN THE EVENT OF ANY DISCREPANCIES FOR CLARIFICATION BEFORE PROCEEDING WITH WORK. DRAWINGS ARE NOT TO BE SCALED. USE ONLY FIGURED DIMENSIONS. REFER TO CONSULTANT DOCUMENTATION FOR FURTHER INFORMATION.

DLCS Quality Endorsed Company ISO 9001:2008, Registration Number 28476
Notified Architect: Nicholas Turner 8695, ABN 86 064 084 911

BASIX

LEGEND



Rev.	Date	Approved by	Revision Notes
A-S4.55	22.08.19	JM	S4.55 Application

CLIENT
Deicorp
Level 3, 161 Redfern Street, Redfern
NSW 2016, Australia

Project Title
WSU - Lot 5
158-164 Hawkesbury Road, 2a Darcy Road Westmead NSW 2145 Australia

Scale	Project No.	16001	Drawn by	turner	North
1:1 @A1, 50% @A3	Dwg No.	DA-990-001	Rev.	A-S4.55	
Status	For Information				

TURNER

L7, ONE Oxford Street
Darlinghurst NSW 2010
Australia

T +61 2 8668 0200
F +61 2 8668 0268
turner@turner.com.au

Elevation/ Section Legend

- BAL1 Balustrade Type 1: Semi-Framed clear glass balustrade. Framing system, finish to match PF8
- BAL2 Balustrade Type 2: Semi-Framed clear glass balustrade fixed to solid spandrel panel/panel wall. Framing system, finish to match PF8
- BAL3 Balustrade Type 3: Vertical metal balustrade, powder coat finish to match PF8
- CL1 Cladding Type 1: Metal cladding, colour to match PF4
- CL2 Cladding Type 2: Metal cladding, colour to match PF8

- CL3 Cladding Type 3: Perfect metal cladding, colorbond "sunburst" finish
- CL4 Cladding Type 4: FC cladding, colour to match PF3
- CL5 Cladding Type 5: Metal cladding, colour to match PF1
- CL6 Cladding Type 6: Timber/plastic composite cladding, acoustic lining to balcony sides and walls, "spotted gum" finish
- CL7 Cladding Type 7: Polished stainless steel cladding

- COF1 Concrete, off form. Clear finish or to landscape architect specification
- COF2 Concrete, off form. Paint finish, colour to match PF1
- GC1 Glass, Clear, Type 1: Glass, clear, to BASIX and Acoustic report requirements. Aluminium framing system, finish to match PF8
- GC2 Glass, Clear, Type 2: Glass, light bronze tinted, to BASIX and Acoustic report requirements. Aluminium framing system, finish to match PF4
- GC3 Glass, Colourback, Type 1: Glass, Light Bronze, to BASIX and Acoustic report requirements. Aluminium framing system, finish to match PF4

- GCB2 Glass, Colourback, Type 2: Glass, Dark Grey, to BASIX and Acoustic report requirements. Aluminium framing system, finish to match PF8
- LV1 Louvre Type 1: Clear fixed open glass louvre system similar to Breezeway
- LV2 Louvre Type 2: Acoustic horizontal louvre system. Metal, timber effect finish
- LV3 Louvre Type 3: Acoustic horizontal louvre system. Metal powder coated finish to match PF5
- LV4 Louvre Type 4: Fixed vertical louvre system. Aluminium, finish to match PF4

- LV5 Louvre Type 5: Fixed vertical louvre system. Aluminium, finish to match PF5
- LV6 Louvre Type 6: Fixed vertical louvre system. Aluminium, finish to match PF8
- LV7 Louvre Type 7: Fixed horizontal louvre system. Aluminium, finish to match PF8
- LV8 Louvre Type 8: Fixed vertical louvre system. Timber finish to match CL6
- LV9 Louvre Type 9: Clear operable glass louvre system similar to Breezeway

- PC1 Precast Concrete Type 1: Precast Concrete. Finish: penetrating low maintenance stain finish equal to Kain concrete Laser system, to match PF1
- PF1 Paint Finish Type 1: Vivid White. Finish to match Dulux 'Vivid White'
- PF2 Paint Finish Type 2: Medium Beige. Finish to match Dulux 'Harold'
- PF3 Paint Finish Type 3: Dark Grey. Finish to match Dulux 'Domino'
- PF4 Paint Finish Type 4: Finish to match Dulux Electro 'Shimmering Champagne' powder coat

- PF5 Paint Finish Type 5: Finish to match Dulux 'Fist White' powder coat
- PF6 Paint Finish Type 6: Finish to match Dulux 'Flooded Gull'
- PF7 Paint Finish Type 7: Finish to match PF8
- PF8 Paint Finish Type 8: Finish to match Dulux powder coat 'Black Ace'
- SC1 Screen Type 1: Timber batten fence, finish similar to Cedar

- SC2 Screen Type 2: Architectural metal mesh screen to comply with Ralcorp requirements
- SC3 Screen Type 3: Metal louvre screen with integrated planting at mechanical air intake. Colour to match PF4
- SC4 Screen Type 4: Metal framed shedding structure with timber battens
- BRK1 Brick Type 1: Face brick similar in colour to Bowral 'Shortform Mix'
- BRK2 Brick Type 2: Glazed face brick to address landscaped areas, to future selection